



* £200,000 - £225,000 * PRIVATE BALCONY * ALLOCATED PARKING * WALK TO BOTH PRITTLEWELL AND SOUTHEND CENTRAL TRAIN LINES * This immaculate second-floor flat has a private balcony, a superb central location near both lines to London and is available to view now! The accommodation is comprised of; allocated parking, a communal entrance with door entry system and a lift service, private hallway with storage, a spacious open-plan room with a luxury fitted kitchen and lounge and dining areas with sliding doors out to the private balcony, a double bedroom with built-in wardrobe and a three-piece bathroom as well as beautiful communal gardens too! The location offers London commuters a short walk to both train lines servicing the City and there are a range of amenities and bus links seconds away, not to mention Southend High Street and the beachfront. This home would be perfect for hospital workers, investors and first-time buyers and is available to view now!

- Allocated parking
- High level finish throughout
- Walk to Prittlewell and Southend Central Stations
- Bus links seconds away
- Communal garden
- Private balcony
- Bright open plan kitchen-reception
- Southend High Steet and the beach a walk away
- Southend University Hospital and the grammar schools nearby
- Perfect for first time buyers and investors

Fairfax Drive

Westcliff-On-Sea

£200,000

Price Guide



Fairfax Drive



Parking/Frontage

One allocated parking space, with a door/phone entry system at the communal entrance.

Communal Entrance

Lift service to upper floors as well as a staircase, property is on the second floor with a private entrance door leading to:

Kitchen-Reception Room

23'7" x 15'6" > 11'2"

A large and bright reception room with a UPVC double glazed sliding door for access to the private balcony as well as two further UPVC double glazed windows. Modern kitchen units both wall-mounted and base level comprising; a stainless steel sink and drainer with mixer tap and instant boiling water tap, four ring burner hob with a stainless steel extractor hood over, integrated eye level oven, integrated fridge/freezer, integrated dishwasher, integrated washing machine, quartz worktops with tiled splashbacks, radiator, spotlighting, skirting and engineered wooden flooring.

Bedroom

13'10" x 10'11"

UPVC double glazed window, large set of built-in wardrobes with sliding mirrored doors, radiator, skirting and carpet.

Bathroom

7'7" x 6'7"

Tiled bath area with shower attachment and electronic control, combined vanity unit with wash basin and WC, wall-mounted mirrored cupboards, chrome towel radiator, spotlighting, extractor fan and floor tiling.

Balcony

10'3" x 5'2"

Metal and glass balustrades with a decked floor and space for table and chairs.

Communal Garden

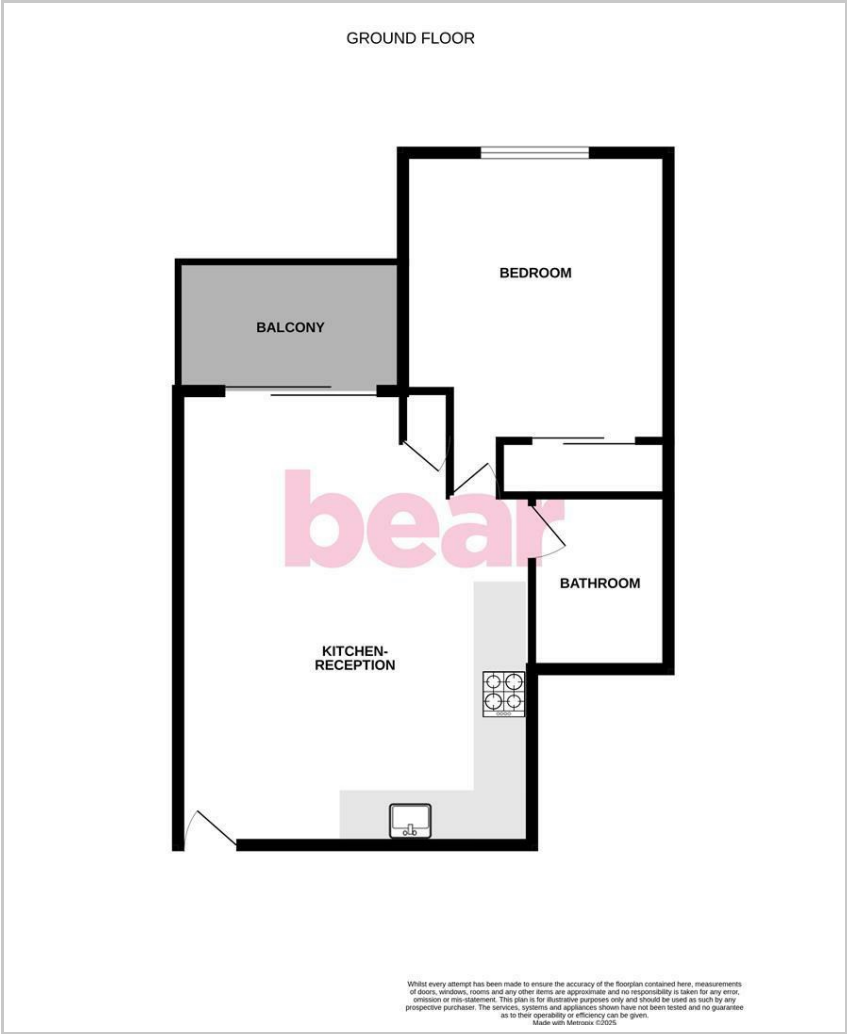
Beautifully mature garden with paved seating areas.

Agents Notes:

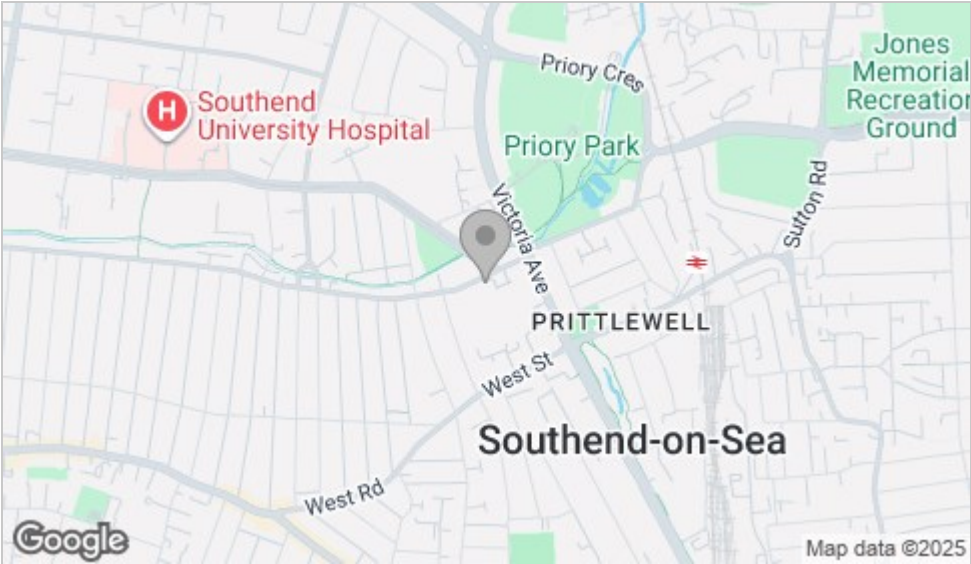
Council tax band: B



Floor Plan



Area Map



Viewing

Please contact our Leigh-on-Sea Office on 01702 887 496 if you wish to arrange a viewing appointment for this property or require further information.

These particulars, whilst believed to be accurate are set out as a general outline only for guidance and do not constitute any part of an offer or contract. Intending purchasers should not rely on them as statements of representation of fact, but must satisfy themselves by inspection or otherwise as to their accuracy. No person in this firms employment has the authority to make or give any representation or warranty in respect of the property.

1336 London Road, Leigh-on-Sea, Essex, SS9 2UH

Office: 01702 887 496 los@bearestateagents.co.uk <http://www.bearestateagents.co.uk/>

Energy Efficiency Graph

